

# Finger Alert

## 2 door-strips

1 for the outer side of the door  
1 for the inner side of the door

protect  
children's  
fingers from  
pinching  
in the door  
(0 - 4 years)



Suitable for both sides of the door.  
Up to a door thickness of 5 cm.  
A door provided  
with strips can  
open up to 110°.

**KIKIDOO®**



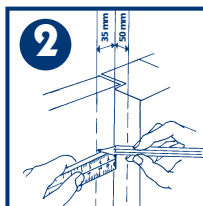
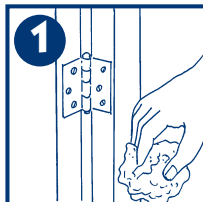
**PATENT PENDING**

**Please read these instructions carefully before fitting:**

Do not use on the outside of external doors unless the door is protected from the sun and humidity. Strips used externally will have a much shorter life, dependant on the amount of exposure received.

**A. The wide strip for the side where the hinges are not visible when the door is closed.**

1. Open the door and thoroughly clean and dry the door and frame, ensuring that no grease or residue remain.
2. Close the door. Lightly draw two vertical guide lines, one on the door 35 mm from the corner, and one on the door frame 50 mm from the corner, up to a height of 1.2 m from the floor.
3. Remove the protective paper from one adhesive strip. Attach the adhesive strip to the door frame just inside the guide line, ensuring that the bottom of the protector is no more than 5 mm above the floor.
4. To ensure correct adhesion, rub your fingers firmly up and down the adhesive strips for 2 minutes. Then close the door and do not open for at least 15 minutes.

**B. The smaller strip for the side where the hinges are visible when the door is closed.**

- 2b. Clean the door and the door post as described in section A1. Close the door and lightly draw 2 vertical guide lines 20 millimetres to the left and right of the hinge (one on the door and one on the door post). This will ensure the strip is correctly positioned when attached. Follow steps 3 and 4 of section A.

**Keep these instructions for future reference!**

- Caution: Do not open doors fitted with Finger Alert Strips more than 110° - fit door stoppers if necessary to avoid damage to the door and frame.
- Check the protectors regularly for strong adhesion.
- The strips can also be nailed or screwed into place through the grooves in the edging strips.  
**NB** If water based paint is present on the door or door frame the finger alert must be screwed or nailed into place.
- If used in children's day care centres, crèches or play centres, etc we strongly advise that the strips be nailed or screwed into place every 30 cm.
- The adhesive may cause damage to surface finishes. When removing the protectors, do so very carefully.
- Removing the adhesive strips can damage the paintwork. To prevent this, the strips must be pulled off lengthwise, at a 90 degree angle from the door.



The producer accepts no responsibility for any loss or damage suffered by any person or property as a result of the fitting, use or misuse of this product.



**There is no substitute for proper adult supervision.**

Arte Viva Innovative Products  
Zeeuwsesteen 13, 3961 XL Wijk bij Duurstede - NL  
www.fingeralert.com - Made in the Netherlands